

OPENING THE SAFE IN EMERGENCY

Either the electronic circuit malfunctioned, or codes unknown, you could also have 2 options to open the safe. The operation in details refers to "opening your safe for the first time".

OPTION A:

- The safe has been supplied with an external power supply, insert batteries into the power supply, then plug into the jack on the bottom of the keypad, refer to the picture shown below.
- Press "#" to startup the electronic lock.
- Enter preset user code "1234", then press the "# " key.
- Turn the knob (master key) clockwise, the safe is open now.

OPTION B:

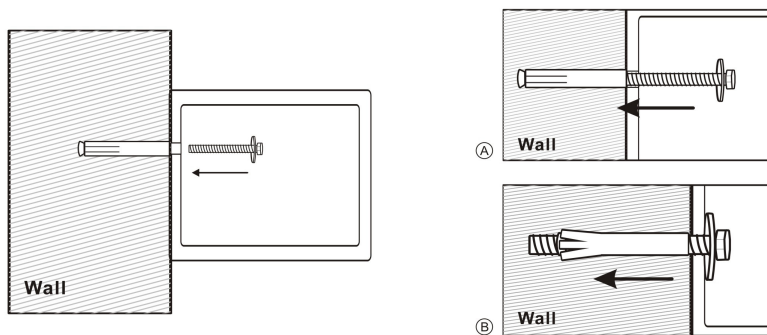
- Remove the cover and use emergency lock.
- Insert emergency key, turn counter clockwise and turn the knob (master key) clockwise to open the door.

MOUNTING METHOD

Fix the safe in the place which is not easy to move.

- Drill holes for expansion bolts (or clamping screws) in the right place.
- Turn the expansion bolts counter clockwise to separate.
- Use the expansion bolts (or clamping screws) to secure the case to the wall.
- Make sure the case is mounted in place as required and then tighten all screws.

⚠ **CAUTION:** Use the expansion bolt when there is a concrete wall surface. Use the clamping screw when there is a wooden wall surface.



INTELLIGENT ELECTRONIC SAFE

(FOR EID SERIES)

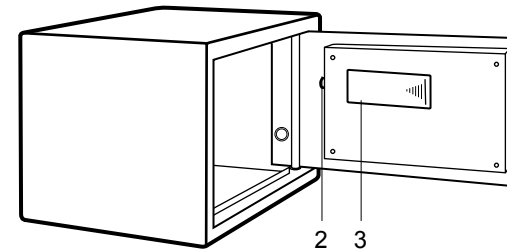
⚠ **Please do not keep emergency keys in your safe!**

Dear valued customer:

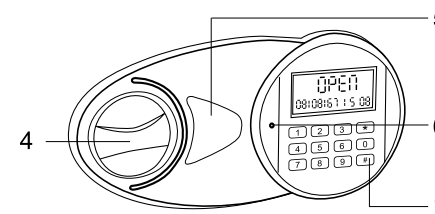
Thank you for choosing our products! You've taken an important step in organizing and protecting your most valued possessions. Every series of our safes is professionally made and designed to provide safety. Please take time to read and familiarize yourself with the proper operating procedures of your new safe presented on the following pages.

Again, thank you for choosing our products!

Schematic drawing of case



Schematic drawing of control panel



1. Bolts
2. Reset Button
3. Battery Compartment
4. Knob (Master Key)

5. Emergency Lock Cover
6. Jack for External power
7. Confirming Button
8. Power Supply : 4xAA batteries

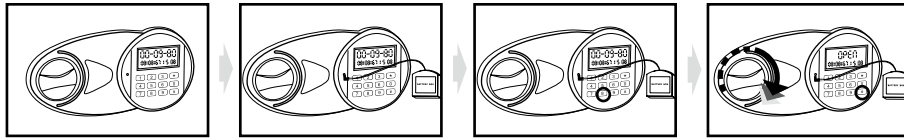
For any help, kindly consult the local distributor

OPENING YOUR SAFE FOR THE FIRST TIME

Upon first opening, you have two options to open the safe.

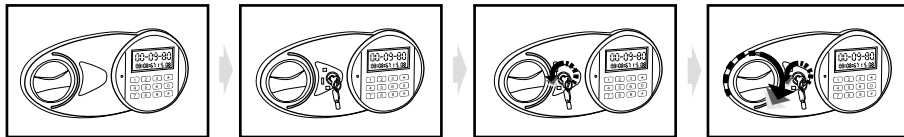
OPTION A:

- The safe has been supplied with an external power supply, insert batteries into the power supply, then plug into the jack on the bottom of the keypad, refer to the picture shown below.
- Press “#” to startup the electronic lock.
- Enter preset user code “1234”, then press the “#” key.
- Turn the knob (master key) clockwise, the safe is open now.



OPTION B:

- Remove the cover and use emergency lock.
- Insert emergency key, turn counter clockwise and turn the knob (master key) clockwise to open the door.



INSERTING THE BATTERIES

- Open the door.
- Insert 4AA batteries into the battery compartment. When batteries are inserted, the display will flash "ALL READY", and then the system is actuated to scan the circuit. After that, it will be in standby mode, while showing year, month, date and day.
- Under normal condition, if the display shows “LO-BATTE”, it means the voltage is low and you should insert new batteries.

⚠ CAUTION: Replace 4 fresh batteries by lining them up in a manner as indicated by the “+” and “-” signs.

OPENING DOOR

- Press key “#”.
- Input your 3-8 digits user’s code within 7 seconds and press “#” to confirm.(Preset code: 1-2-3-4)
- Rotate knob (master key) clockwise to open the door.

⚠ CAUTION: You may press the key “*” to clear any incorrect digit you have input. One digit will be cleared each time when you press the key.

ALARM DEVICE: If the wrong code is entered 3 times consecutively, the key pad will automatically lock for 5 minutes and the alarm will sound for 30 seconds. If press key “0”, the display read “BELL ON” into alarming mode, the alarm will sound for 30 seconds when been shaking, striking and moving. The sound will stop in 30 seconds but alarming mode can’t be cancelled. When the alarm sounds, if the correct code is entered, it will stop alarming.

CLOSING DOOR

- Rotate knob (master key) to counter clockwise to initial position.

SETTING THE USER CODE

- Open the door and press reset button once, the display shows “.....”.
- Now input 3-8 digits code and press “#” to confirm. The display will read “INTO”, which means the setting is accepted. So now you can use your safe box by new password.

SETTING THE MASTER CODE

- Open the door .
- Press “#” key once and “0” twice, then press rest button once.
- Press your new 3-8 digits code, and press “#” button to confirm, the screen show “INTO”, which indicates the acceptance and storage of the new code.

SETING DATE AND TIME

- a) Initial setting for date is 00(year)-01(month)-01(day), and for time 00:00, and 1(Monday).
- b) Press “*” key, then press “2” and “8” to set the local time.
- c) Press “#” key to shift from date and time and week setting.